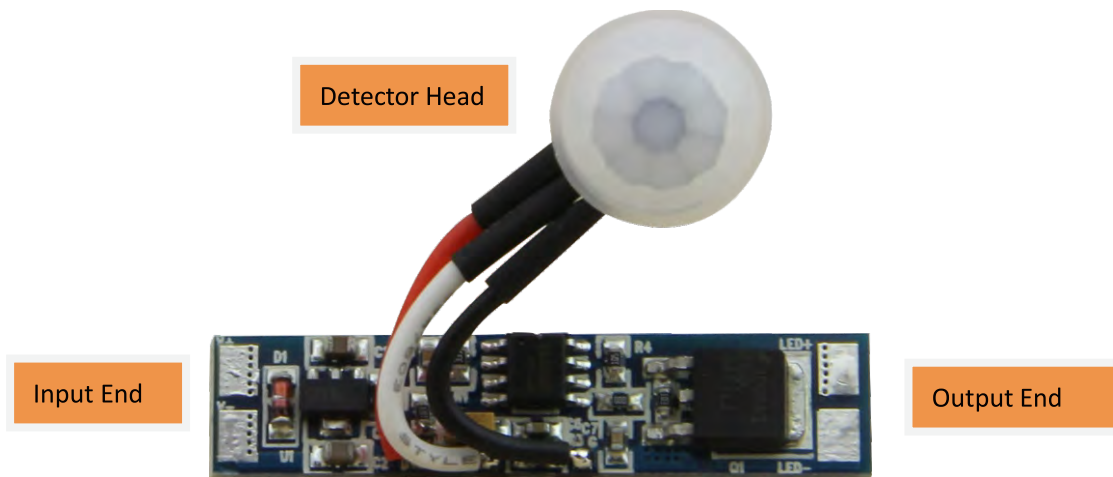


PIR Sensor Switch PIR001

Description	Dimension	Voltage	Load
PIR Sensor switch	10mm x 43mm	12-24VDC	Max. 8 Amps.

PIR Sensor Switch PIR-001 is to be assembled into lighting fixtures, so the lighting fixture can automatically turn on when any part of human body is approaching within 2 meters from the sensor. The lighting fixture equipped with this PIR Sensor will stay on if the human body stays within 2 meters from the sensor. It will turn off in 40 seconds after human body move away more than 2 meters.



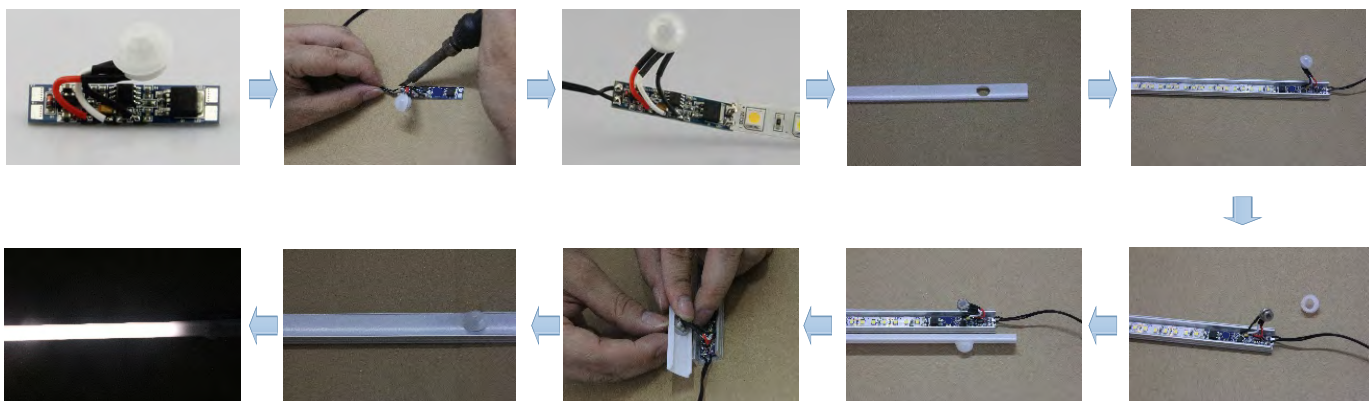
Installation Instructions:

Step I: Cut a 10.5mm hole at the fixture

Step II: Put the Detector Head into the 10.5mm hole

Step III: connect wires to the input end and output end of the control PCB.

LED Profile A1707 equipped with this PIR Sensor:



Note: The function/program can be customized made upon different needs, such us longer time for stay on, etc.....

Lister: Lxlan

Assessor: 

Approver: 